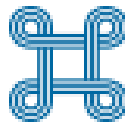


CONTRACT FOR CONSULTANCY SERVICES
No. 08-389/3 DATED 16.01.2023

SUPERVISION AND LEGAL TRANSACTION ADVISOR FOR
CONSTRUCTION OF CORRIDOR VIII AND CORRIDOR X-d

EXECUTIVE SUMMARY OF
REPORT

for period 01.12.2025 – 31.12.2025



PUBLIC ENTERPRISE FOR STATE ROADS

DECEMBER 2025

ENGINEER

GROUP OF BIDDERS:

IRD ENGINEERING S.R.L – ROME (IT)

EPTISA SERVICIOS DE INGENIERIA S.L (ES)

ELEKTRA SOLUTIONS DOOEL - SKOPJE (MK)

EURO CONSULT DOO - SKOPJE (MK)

1. Project Parties:

Contractor:

BECHTEL ENKA UK 2 Limited



Employer:

Public Enterprise for State Roads and the Ministry of Transport on
behalf of the Government of the Republic of North Macedonia



Engineer:

JV leader:

IRD Engineering s.r.l – Rome (IT)

JV members:

EPTISA Servicios de ingenieria s.l; ELECTRA SOLUTIONS DOOEL

Skopje and EURO CONSULTING DOO

Skopje



REPUBLIC OF NORTH MACEDONIA

1. Project Overview and Key Quantities:

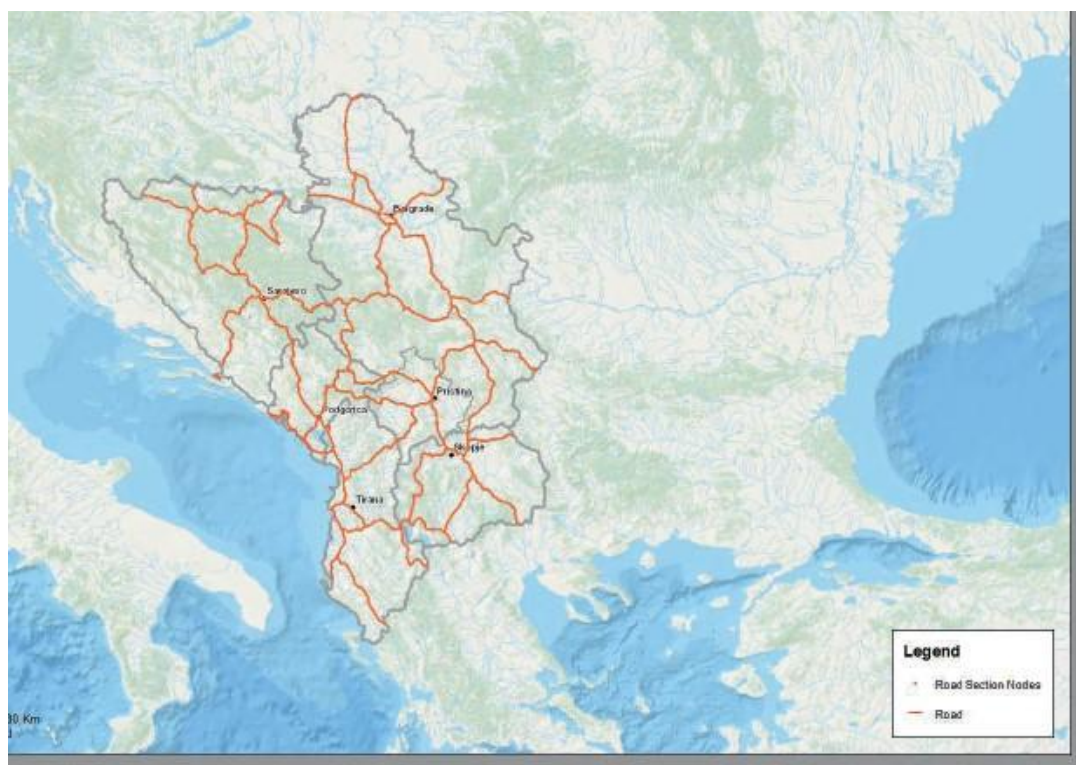
Corridor VIII and X-d project consists of four (4) sections 109 km in total crossing Motorway, railways and, Vardar and Black Drin Rivers along the route.

Corridor VIII is a key component of the Indicative extension of the TEN-T Core and Comprehensive Network to the Western Balkans, connecting the Adriatic Sea and the Black Sea through Albania, North Macedonia, and Bulgaria. Per project scope, Tetovo – Gostivar - Bukojcani and Trebenista – Struga – Kjafasan Motorway sections (Section 1, 2 and 3) will be built.

Corridor X-d is also part of an Indicative extension of the TEN-T Core and Comprehensive Network to the Western Balkans connecting North Macedonia and Greece. Per project scope, Prilep-Bitola section (Section 4) will be built.

These Corridors are connecting the Republic of North Macedonia with the regional infrastructure and ports in Albania, Bulgaria, and Greece.

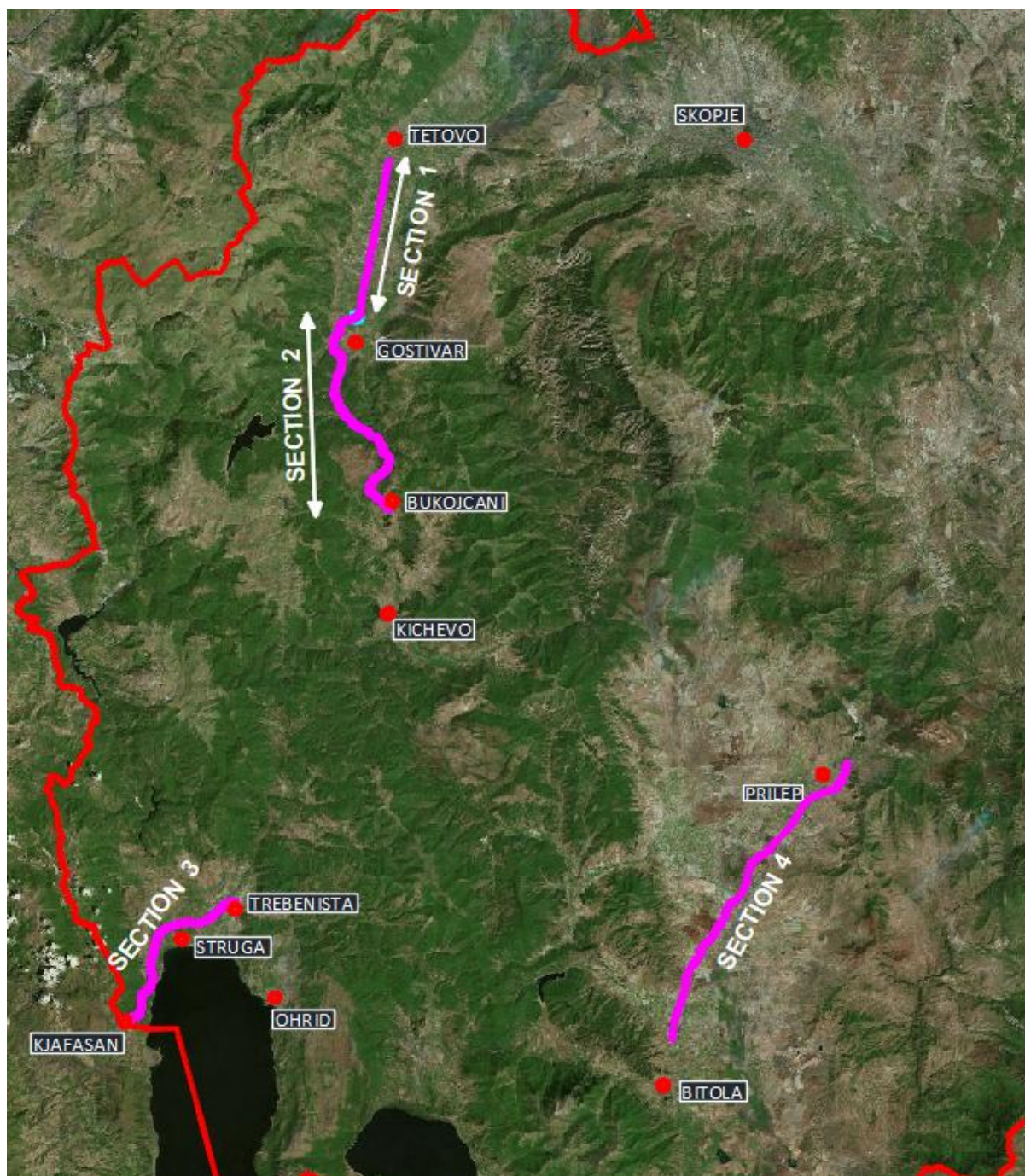
Below is a picture of the indicative extension of the TEN-T Core and Comprehensive Networks in Western Balkans as provided for by the Commission Delegated Regulation (EU) 2016/7581-Annex I.1



Indicative Extension of TEN-T Core and Comprehensive Road Network to the Western Balkans

REPUBLIC OF NORTH MACEDONIA

INDICATIVE ALIGNMENT PLAN VIEW



REPUBLIC OF NORTH MACEDONIA

GENERAL PROJECT OVERVIEW

Construction Contract:	Construction of Corridor 8: Tetovo – Gostivar - Bukojcani and Trebenista – Struga - Kjafasan Motorway section and Corridor 10-d: Prilep – Bitola Motorway section		
Construction Contract Number:	No. 09-2234/1 dated 08.03.2023		
Name:	Public Enterprise for State Roads and the Ministry of Transport on behalf of the Government of the Republic of North Macedonia	Bechtel Enka UK 2 Limited operating through BECHTEL ENKA UK 2 LIMITED-Branch Office in North Macedonia Skopje	IRD Engineering s.r.l – Rome (IT) – JV leader JV members: EPTISA Servicios de ingenieria s.l; ELECTRA SOLUTIONS DOOEL Skopje and EURO CONSULTING DOO Skopje
Role:	Collectively called the “Employer”	Contractor	Engineer
Purpose of Construction Contract:	Provision of Construction Services in the capacity of the Contractor to execute and complete the Works in accordance with the Contract.		
Contractual Start Date:	March, 2023	Contractual End Date:	December, 2029

REPUBLIC OF NORTH MACEDONIA

The Project's major estimated quantities are shown below. As part of the Work scope, design and design related work is ongoing. Below mentioned quantities shall be subject to change in accordance with project technical requirements.

Total Length (km)	109 km
Total Number of Underpasses (ea)	24
Total Number of Overpasses (ea)	34
Total Length of Bridges (m)	4,500m
Total Excavation (m³)	21 million m ³
Total Fill (m³)	10 million m ³
Total Concrete (m³)	620,000 m ³
Total Subbase (m³)	1.2 million m ³
Total Asphalt (ton)	1.1 million ton

2. Environmental, Safety and Health (ES&H):

2.1.ES&H Activities

As of December 2025, the following ES&H activities progressed:

- ES&H inspections of all active sites
- Weekly Project safety talks
- Conducted FLHA (Field Level Hazard Assessments) and JHA (Job Hazard Analysis) reviews in the field
- Continued weekly ES&H walk-downs at various Project locations
- Conducted new hire ES&H inductions

2.2.Environmental Assessment Studies

- The Environmental Impact Assessment Studies for Sections 1, 2A and 4 have been completed and drafts submitted to Employer.
- The Environmental Impact Assessment Studies for Sections 1 and 2A have been published by the MoEPP on their website.
- The Public Hearings for Section 1 Environmental Impact Assessment study have been held.
- The Environmental Impact Assessment studies for Section 2B-2C have commenced.
- The Strategic Environmental Assessment and Environmental Social Impact Assessment studies for Section 3 have commenced
- The Letter of Intent for Section 3 ESIA has been published by the MoEPP on their website.

3. Work Progress:

In the period of December 2025, Contractor (where applicable Specialist Contractors are engaged to deliver Employer's scope) continued to perform works mainly for geotechnical investigation works, motorway design & specifications, - Temporary Traffic Management works, Demolition and Removal of Existing Structures and other Roadway Elements and construction activities mainly for Earthworks, Drainage and Structures.

As of 08.07.25 in Extract from the Draft Minutes of the Ninetieth (90th) Session of the Government of North Macedonia no.50-6718/4, the Employer reached a final decision regarding Motorway Alignment in Section 2 confirming the designer's mountain variant Alignment design. In respect to Employer's decision the ongoing works in Section 2 completion percentages revised accordingly.

The Contractor shall continue to provide support to the Employer in completing the activities and acts in accordance with the Employer's instructions as by the referenced decision of the Republic of North Macedonia.

By the end of the reporting period, above mentioned activities are ongoing in all Sections as presented in below chapters.

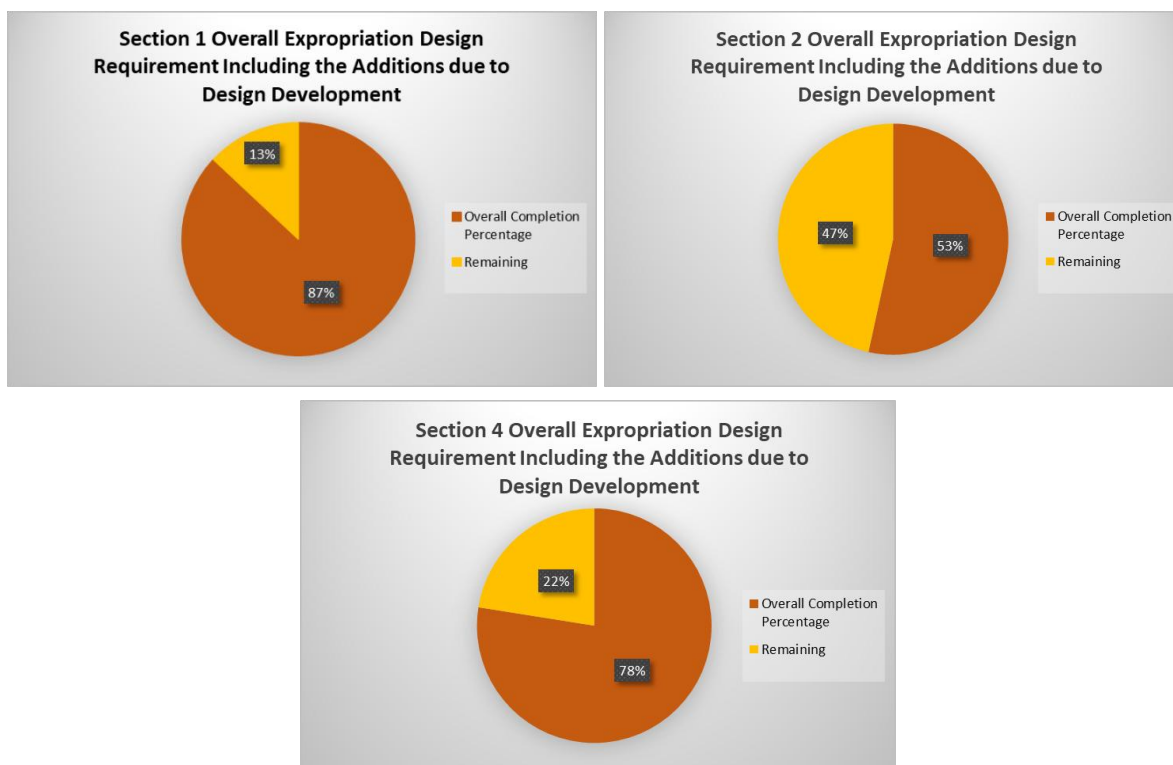
3.1.Expropriation Design

The design of expropriation is essential for motorway projects as it is the first design required for the commencement of motorway design activities. Expropriation design is prepared as part of the Urban Project for Buildings of Strategic Interest for the Motorway. Expropriation design is Employer's responsibility for which Specialist Contractors have been engaged.

Along with design development processes, additional requirements have arisen in expropriation designs. Revised expropriation boundaries have been defined in Urban Projects for buildings of strategic interest for relevant Section and additional expropriation designs are prepared. Total scope for expropriation design has been increased.

Total Expropriation Design progress together with recent additional requirements through the end of December 2025, can be seen below, by Section.

Important Note: This is not progress of Expropriation. Expropriation Design is a step required prior to commencing formal expropriation process. The charts below represent the Expropriation Design Progress against the Urban Project Boundaries approved to date.

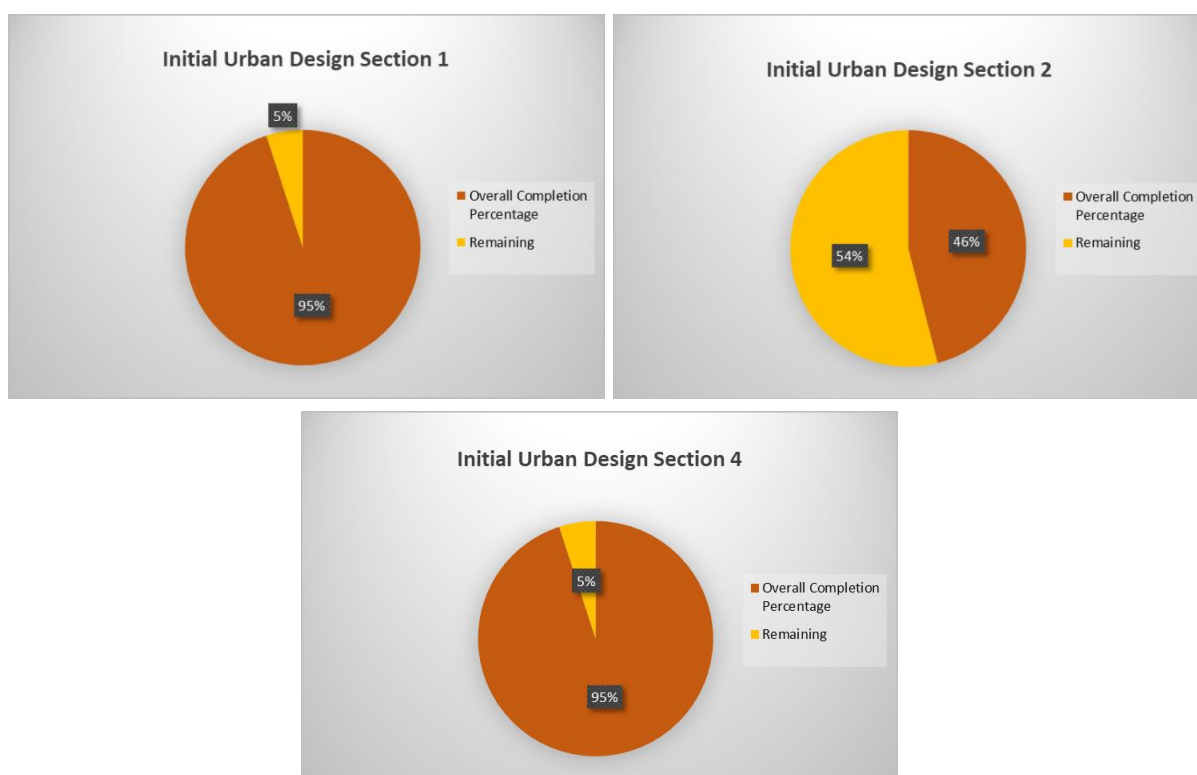


*Revised accordingly to Employer's decision in Section 2 Alignment. (See Section 3. "Work Progress")

REPUBLIC OF NORTH MACEDONIA

Preparation of expropriation design allows Employer to start evaluation process however the expropriation process can only be started once the Urban Project for Buildings of Strategic Interest is approved by the Government of the Republic of North Macedonia.

For this purpose, Urban Designs are developed by Specialist Contractors within the Project. Progress of Urban Design through the end of December 2025, can be seen below, by Section.



Urban project for buildings of strategic interest has been approved by Government of North Macedonia (GoNM) for the following Sections:

Section	Chainage	GoNM Approval
Section 1	37+716 - 53+127	Official Gazette no:229 dated 27.10.2023
Section 2	0+000 - 8+430	Official Gazette no:229 dated 27.10.2023
Section 4	7+840 - 37+060	Official Gazette no:244 dated 20.11.2023
Section 1 / Amendments	35+718 – 53+127	Official Gazette no:92 dated 22.04.2024
Section 4 / Amendments	7+825 – 11+740	Official Gazette no:103 dated 15.05.2024
Section 2 / Amendments	0+000 – 14+700	Official Gazette no:120 dated 07.06.2024
Section 1 / 2 nd Amendment	35+641 – 53+127	Official Gazette no:227 dated 08.11.2024
Section 2 / 2 nd Amendments	0+000 – 14+700	Official Gazette no:110 dated 02.06.2025

REPUBLIC OF NORTH MACEDONIA

Following completion of initial design of motorway, amendments to urban project for building of strategic interest is being prepared by Specialist Contractor Motorway designers and expropriation boundaries are being adjusted as needed.

Employer expropriation process is based on approved urban project for building of strategic interest and legal documents as prepared by relevant authorities in Tetovo, Gostivar, Prilep and Bitola.

3.2. Establishment of Geodetic Benchmark Network

A geodetic network is a network, often of triangles, that are measured precisely by techniques of surveying, such as terrestrial surveying or satellite geodesy.

The establishment, measurement, and calculation of coordinates constitute the stages of network benchmarks.

The use of geodetic network is essential and necessary in motorway projects. It is used in all stages of construction projects to provide topographical measurement for motorway design. Additionally, geodetic network has a key role in demonstrating the compatibility of construction activities with motorway design during the construction phase.

Establishment of Geodetic Benchmark Network is Employer's responsibility for which Specialist Contractors have been engaged.

Progress of the establishment of Geodetic Benchmark Network through the end of December 2025, is 100% for Section 1, 47%* for Section 2 and 100% for 4 against defined Road Corridor.

*Revised accordingly to Employer's decision in Section 2 Alignment. (See Section 3. "Work Progress")

3.3. Topographical Survey Works

A topographic survey, also referred to as a land, terrain or topo survey, is a type of survey that maps the boundaries, features, and levels of a site. Topographic surveys are a key component of the design process for a site and should be completed prior to detailed design work.

Topographic surveys are highly beneficial for number of projects, with one of the main benefits being that they aid with planning and decision-making. A topographic survey provides accurate land measurements and gives a clear indication of the arrangements of an existing site, which can be used to make decisions on the planning of motorway design.

Establishment of Topographical Survey Works is Employer's responsibility for which Specialist Contractors have been engaged.

Progress of the Topographical Survey Works through the end of December 2025, is 100% for sections 1, 2 and 4 against defined Road Corridor.

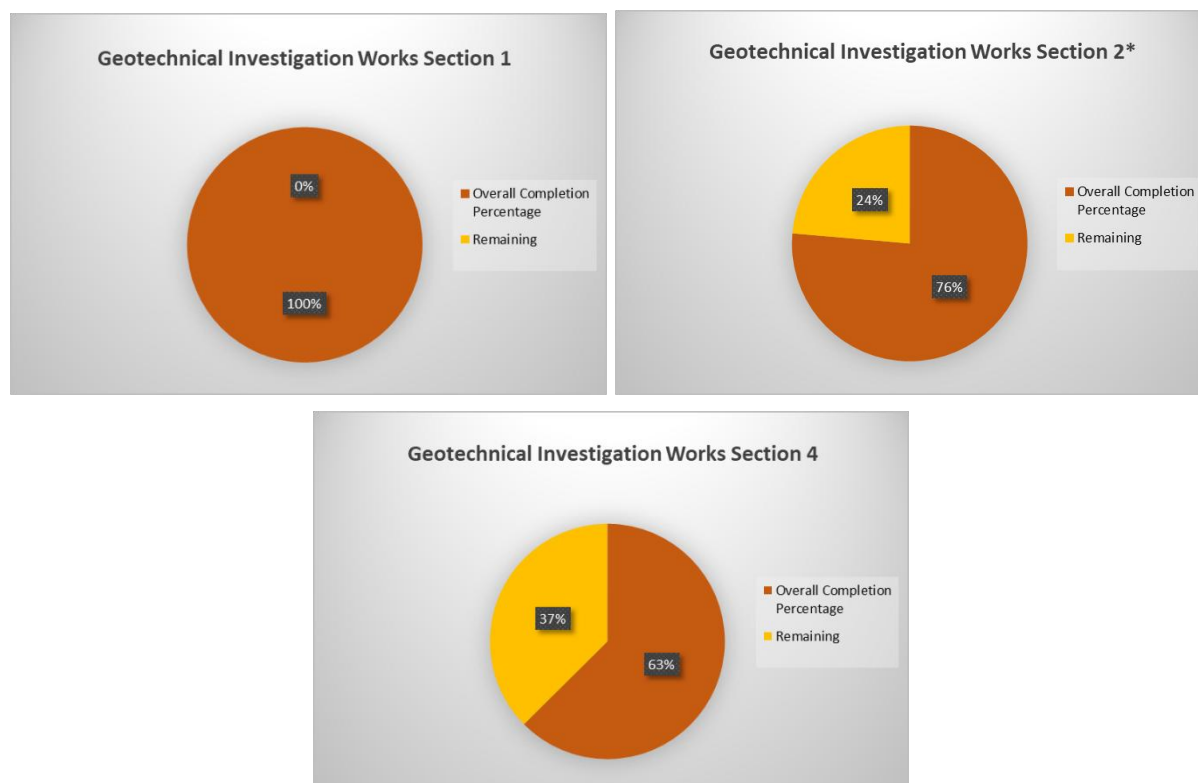
3.4. Geotechnical Investigation Works

Geotechnical investigation works are necessary for understanding the engineering geological structure of the terrain. Based on precisely planned geotechnical investigation works and testing's, important data are obtained for further design processes of both the main route of the highway and all accompanying structural facilities. After collecting data from investigative works in the field, primarily through investigative drilling with continuous coring and SPT tests and laboratory tests on soil and rock mass samples, the obtained data are processed, and the prevailing parameters at the location in question are adopted. Based on the obtained results, the conditions prevailing in the field, which are necessary for the design process, are considered. The geotechnical conditions that prevail in the field are of key importance for the further design and adoption of the type and method of foundation, as well as the execution of works on the entire route of the future Motorway. This approach allows for objective observation of the interaction between the planned Motorway construction and the surrounding terrain, which facilitates the optimization of planned constructions and helps avoid potentially problematical terrain, thereby helping to minimise potential additional problems and costs during the execution of the Works.

In order to execute Geotechnical Investigation Works, roads to investigation locations are also required and are executed in a programme according to priorities of the Works and are included in the Geotechnical Investigation Works.

Establishment of Geotechnical Investigation Works is Employer's responsibility for which Specialist Contractors have been engaged.

Progress of the Geotechnical Investigation Works through the end of December 2025, can be seen below, by Section against the defined Road Corridor and applied exploration areas for Quarries and Borrow Pits.



*Revised accordingly to Employer's decision in Section 2 Alignment. See Section 3. "Work Progress" (page. 8)

3.5. Motorway Specifications and Design & Review of Motorway Specification and Design

Motorway specifications and design encompass detailed guidelines and parameters essential for the construction of motorways. Specifications outline requirements for materials, structural integrity, drainage systems, traffic control, and environmental protection. Design considerations involve aligning the motorway route, designing interchanges and structures, determining pavement layers, managing drainage, and addressing environmental impacts. A thorough review of motorway specifications and designs ensures compliance with regulations, accuracy, feasibility, safety, environmental considerations, stakeholder input, value engineering, quality assurance, proper documentation, and continuous improvement practices. By adhering to these processes, motorway projects can be effectively executed, ensuring safety, efficiency, and environmental sustainability.

3.5.1. Motorway Specifications and Design

Motorway design encompasses various elements and considerations aimed at creating safe, efficient, and sustainable motorways for high-speed vehicular traffic. Designers carefully plan the route of the motorway, considering factors such as terrain, environmental impact, land use, and anticipated traffic volume. The alignment should minimize disruptions to existing infrastructure and communities while providing the most efficient travel route.

Motorways typically feature multiple lanes in each direction, separated by a central reservation or median barrier. The width of lanes, shoulder widths, and median barriers are designed to meet safety standards and accommodate different types of vehicles. Interchanges and junctions allow vehicles to enter, exit, or change direction on the motorway. These are designed to minimize congestion, facilitate smooth traffic flow, and ensure safety. Different types of interchanges, such as diamond, cloverleaf, or stack interchanges, can be utilized depending on traffic volumes and spatial constraints.

The main parts of motorway design can be categorized into several key components.

- Urban Planning

Motorway urban planning involves the integration of motorways into urban areas in a way that balances the need for efficient transportation with the goals of sustainable development, environmental protection, and community well-being.

- Roadway Design

In motorway design, the design of roadway, drainage, and pavement are critical components that contribute to the safety, durability, and functionality of the motorway.

The integration of well-designed roadway, drainage, and pavement components is crucial for creating a motorway that meets the needs of users while minimizing negative impacts on the environment and maximizing the lifespan of the infrastructure. By carefully considering these elements during the design phase, transportation engineers can create a sustainable and resilient motorway system that serves the community for years to come.

- Motorway Structures Design

Motorway structures refer to various engineered elements that are integral to the design and construction of motorways. These structures serve a variety of purposes, including supporting the roadway, providing safe passage over obstacles, and facilitating efficient traffic flow. Below are some common types of motorways structures:

- Bridges and Viaducts
- Overpasses and Underpasses
- Interchange Structures
- Retaining Walls

Motorway structures are designed and constructed with meticulous attention to detail to ensure safety, durability, and functionality.

- Utility Design

Utility relocation and protection are crucial aspects of motorway projects, ensuring that existing utilities such as water pipes, gas lines, telecommunications cables, and electrical infrastructure are properly managed to avoid conflicts and disruptions during construction.

Utility relocation and protection designs for motorway projects can minimize disruptions, enhance safety, and ensure the long-term functionality and reliability of utility infrastructure alongside the construction of the motorway.

- Environmental Impact Assessment (EIA)

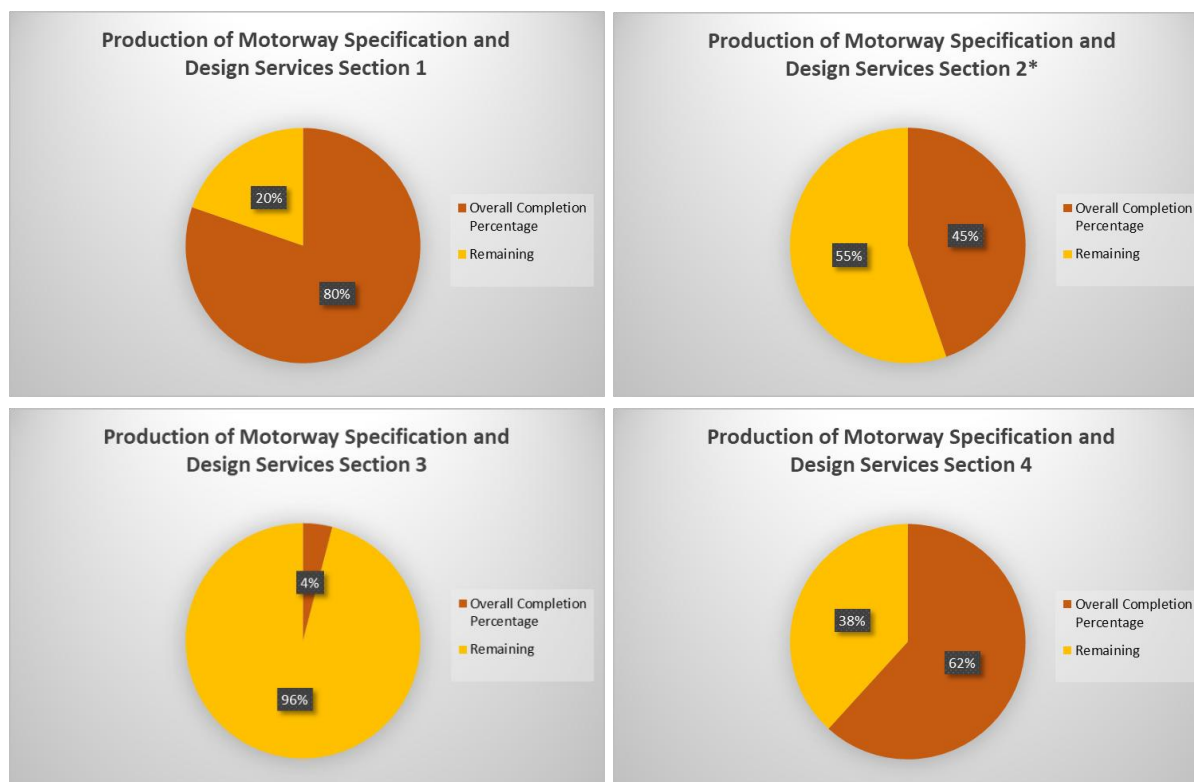
A motorway Environmental Impact Assessment (EIA) is a comprehensive study conducted to evaluate the potential environmental effects of constructing and operating a motorway project. The purpose of the assessment is to identify, predict, and mitigate adverse impacts on the environment, communities, and natural resources, and to inform decision-making processes regarding the project's approval, design, and implementation.

- Technical Specifications

Motorway technical specifications outline the detailed requirements, standards, and guidelines for the construction of motorways. These specifications are typically developed for overseeing motorway projects and are based on industry best practices, engineering standards, and regulatory requirements.

Motorway Specification and Design Works is Employer's responsibility for which Specialist Contractor's have been engaged.

Progress of the Motorway Specification and Design Works through the end of December 2025, can be seen below, by Section.



*Revised accordingly to Employer's decision in Section 2 Alignment. See Section 3. "Work Progress"

3.5.2. Review of Motorway Specification and Design

The review of motorway specifications and designs by technical control involves a comprehensive assessment of the project's technical aspects to ensure adherence to standards, regulations, and best practices. This process includes evaluating geometric design parameters, pavement materials, structural integrity, drainage systems, traffic control features, and environmental considerations. Technical control conducts a thorough examination to verify compliance with established guidelines, accuracy of design documentation, feasibility of implementation, and effectiveness in achieving project objectives. This review aims to identify potential issues, mitigate risks, optimize design solutions, and ensure the quality, safety, and sustainability of the motorway infrastructure.

Review of Motorway Specification and Design Works is Employer's responsibility for which Specialist Contractor's have been engaged.

Review of Motorway Specification and Design Works follow design process and schedule.

3.6. Unexploded Ordnance Investigation Service in Section 4

Unexploded ordnance are explosive weapons (bombs, shells, grenades, land mines, naval mines, cluster munition, and other munitions) that did not explode when they were employed and still pose a risk of detonation, sometimes many decades after they were used or discarded.

In Republic of North Macedonia, protection against Unexploded ordnances (UXO) and explosive substances has been regulated in accordance with the Article 80 from the Law on Protection and Rescue and is a part of the regular competences and scope of activities of the Protection and Rescue Directorate. Protection against Unexploded ordnances (UXO) and explosive substances includes searching of the terrain and detection, discovering unexploded ordnances (UXO), marking and securing the terrain, disabling and destroying of all types of unexploded ordnance and other explosive substances as well as transportation to the determined and prepared place for them to be destroyed [detonated] and providing safety measures during the transportation.

At the beginning of the Works in Section 4, Unexploded Ordinances were discovered. Following the discovery, immediately Employer and related authorities were notified. Providing Site and Borrow Pits, Quarries and Waste Areas cleared of any hazardous Wastes or Materials is Employer's responsibility for which Specialist Contractors have been engaged. According to planned sequence of the Works in Section 4, priority areas were previously identified. The Unexploded Ordnance Investigation Priority areas previously identified to be scanned are complete, and a total of 320 hectares in Section 4 has been scanned to date. This investigation services includes:

- UXO Surveying and Scanning Works
- Clearance Report of the surveyed and scanned area after removal of the items by competent authority (Army of the North Macedonia).

Progress of the Unexploded Investigation Services in Section 4 through the end of December 2025, can be seen below.

Important Note: Unexploded Ordnance Investigation Services in Section 4 only includes the surveying, scanning and reporting of the area. Any extraction, disabling, transportation, destroying etc is out of scope and it is under complete authority of Army of the North Macedonia.

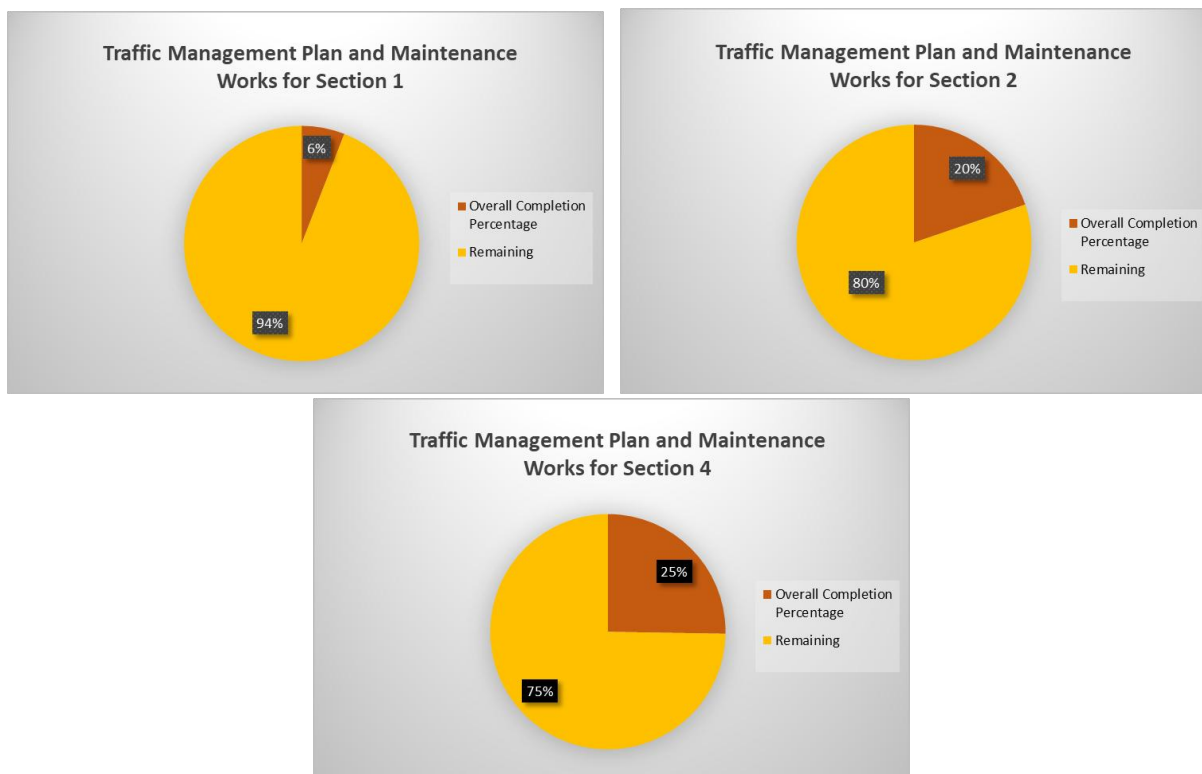


3.7. Traffic Management Plan (TMP) and Implementation

Traffic Management Plan Implementation encompasses the preparatory and operational activities required to maintain safe and continuous traffic flow during road construction. The scope includes physical interventions along the temporary traffic routes, as well as the strategic deployment of signage, road markings, and control equipment in full compliance with regulatory requirements.

This includes the supply of traffic management materials, implementation in coordination with related authorities along with ongoing works, maintenance to ensure continued effectiveness during the construction period, and removal of temporary systems once normal traffic conditions are restored. All these activities are supported by the coordinated mobilization of construction machinery and materials to ensure continuity and efficiency.

Progress of the implementation of the Traffic Management Plan and maintenance works through the end of December 2025 can be seen below, by section.

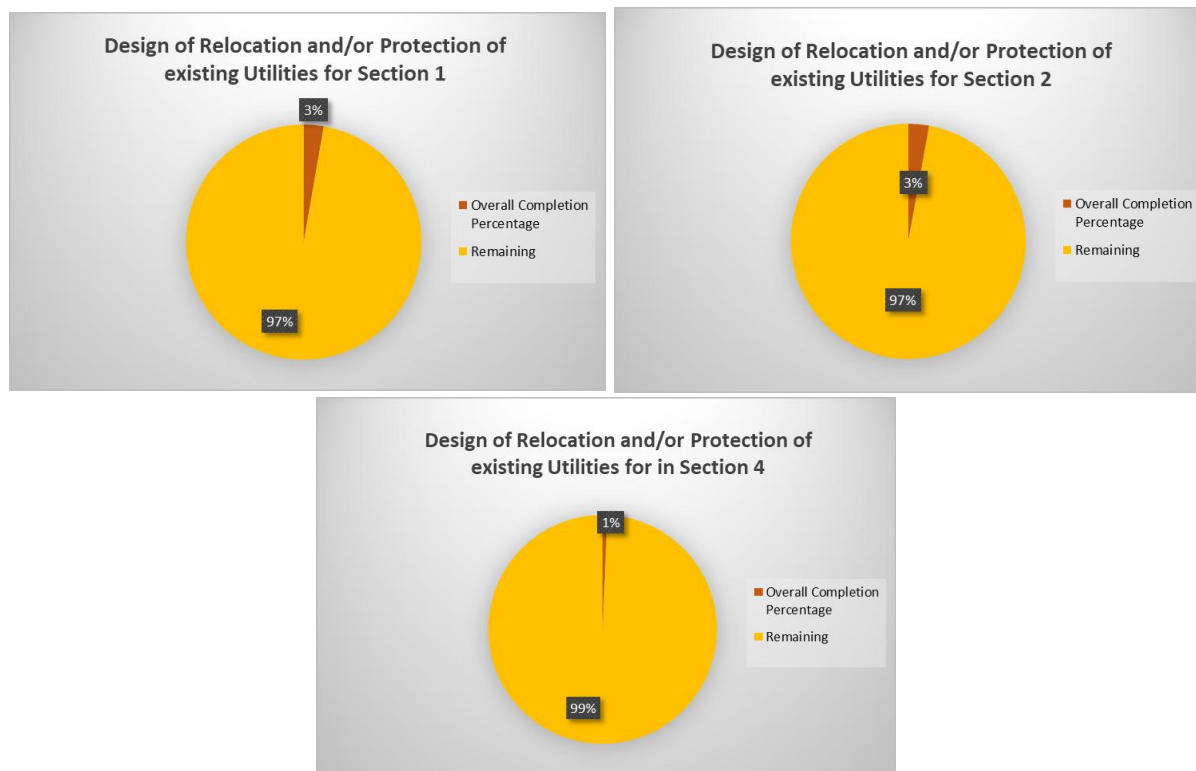


3.8. Relocation and Protection of existing Utilities

Relocation and Protection of Existing Utilities (Telecommunications, Water, Sewer, Electrical Lines etc.) means design, provision and installation of all Relocation (Permanent and Temporary) and Protection of Existing Utilities or removal of existing utilities works by a Specialist Contractor and/or Utility Owners in accordance with the Employer's design and technical specifications.

Throughout the Project, more than 300 existing utility lines must either be relocated or protected. As of December 2025, Specialist Contractors appointed by the Employer are engaged in the design phase for the relocation and protection of utilities, including water supply, irrigation, sewerage, telecommunications, low- to medium-voltage electrical lines and high voltage electrical lines.. Specialist Contractors are coordinating with the respective utility owners to determine the most suitable technical solutions. Upon receiving the Employer's final approval, the relocation and protection works will commence ahead of the motorway construction activities.

Progress of the design of utility relocation and/or protection works through the end of December 2025 can be seen below, by section.

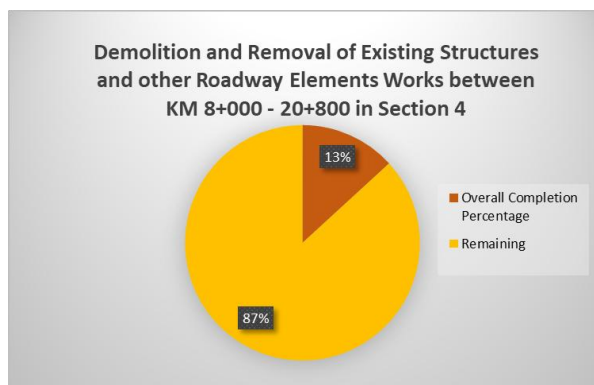


3.9. Demolition and Removal of Existing Structures and other Roadway Elements

Demolition of Structures means demolition of structures on land which is going to be expropriated and subsequently owned by the Government of North Macedonia, performed exclusively to enable the Works to complete the Motorway. The scope of Demolition of Structures includes the dismantling and demolition of structural elements such as street lighting, safety barriers/guardrails, concrete New Jersey barriers, as well as ancillary installations on bridges, overpasses, underpasses, and gantries, together with the clearance and disposal of waste materials. All demolished and/or removed structures and debris shall be transported, disposed of, and/or handed over at designated areas, as instructed by the Employer.

Demolition and Removal of Existing Structures and other Roadway Elements Works are Employer's responsibility for which Specialist Contractors have been engaged.

In the Project, demolition and removal of existing structure works take place in Section 1 and Section 4. As of December 2025, only works between KM 8+000 and KM 20+800 in Section 4 are awarded by the Employer. Progress of the demolition and removal of existing structure works between KM 8+000 - 20+800 through the end of December 2025 can be seen below in Section 4.



3.10. Construction Progress

3.10.1. Earthworks

On site, Earthworks operations continue throughout Section 1, Section 2 and Section 4 Alignment. Current earthworks operations include but are not limited to, clearing and grubbing, topsoil removal and unsuitable material excavation, excavation of the suitable material from Alignment Cut and provide suitable material for the Works by means of hauling and embankment fill. Slope protection measures such as anchoring, shotcreting, installation of geomat and wirenet are executed where necessary.

By the end of December 2025, over 5.0 million m³ excavation and 1.6 million m³ fill has been executed.

3.10.2. Structure

Piling, foundation, elevation, deck slab and beam production/installation operations of bridges, overpasses and underpasses have commenced and continue in Section 1, Section 2 and Section 4. Currently, works are ongoing in eleven (11) bridges, ten (10) overpasses and four (4) underpasses. During the period of December 2025, the beam installation works for the Bridge at KM 10+700 and Bridge at KM 21+800 in Section 4 were carried out. By the end of December 2025, forty (40) pieces of beam at Bridge KM 7+000 were installed in Section 2 and installations included eight (8) pieces of beam at Bridge KM 10+700, twenty-seven (27) pieces of beam at Bridge KM 21+800 in Section 4, seven (7) pieces of beam at Overpass KM 8+300, twenty-two (22) pieces of beam at Underpass KM 14+400, sixteen (16) pieces of beam at Underpass KM 16+600, (22) pieces of beam at Overpass 20+500 in Section 4. In addition, the installation of New Jersey Barrier on the right side of Bridge at KM 7+000 in Section 2 has been completed.

By the end of December 2025, 21,350 m piling works have been executed, 63,000 m³ concrete works have been executed for structures.

3.10.3. Drainage

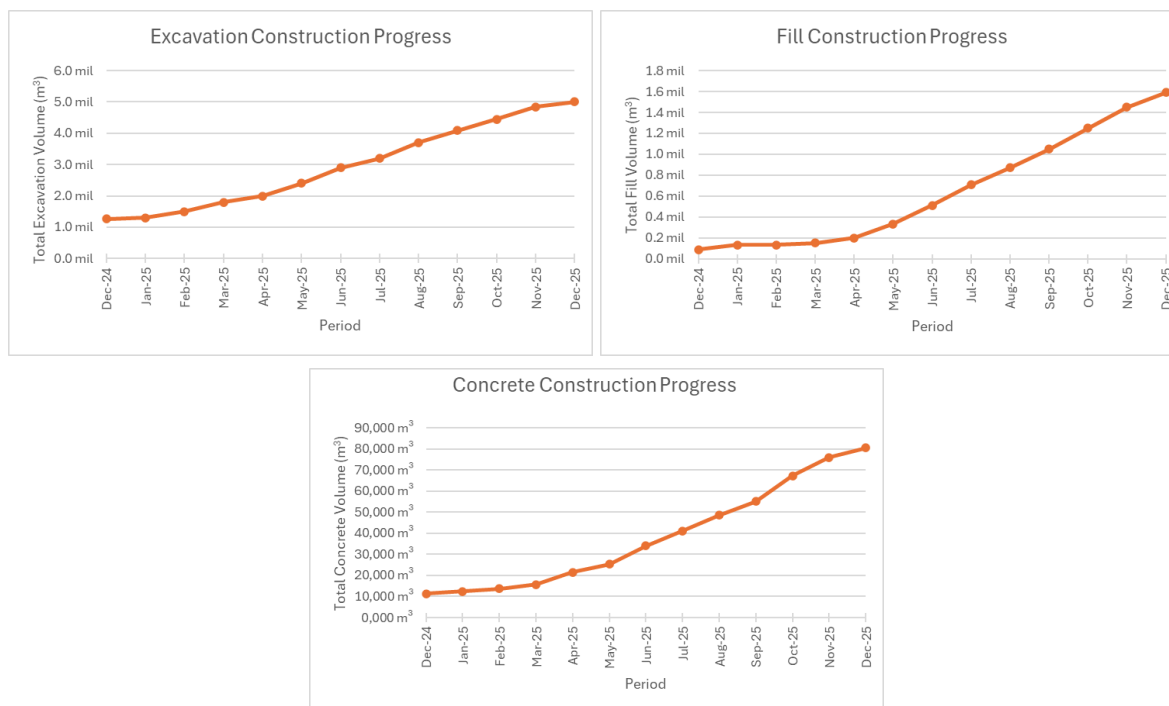
Box culvert, Pipe culvert, external drainage and internal drainage operations are ongoing in Section 1, Section 2 and Section 4. As of December 2025, works are ongoing in twenty-five (25) culverts in Section 1, in seven (7) culverts in Section 2 and in forty-seven (47) culverts in Section 4. By the end of December 2025 13,600 m³ drainage concrete works have been executed.

Internal drainage in a motorway consists of a network of channels, pipes integrated within the road structure to collect and carry surface water from the carriageway. Oil separators, as part of internal drainage system, are devices designed to prevent oil that may be present in runoff from contaminating the drainage water before it is discharged into external drainage system. As of December, three (3) oil separators have been installed in Section 4.

In Section 1, Radiovce – Bistrica irrigation channel relocation activities are in progress. The works include diverting the existing irrigation channel into a re-aligned channel, followed by backfilling and reinforced channel concrete works executed by the Contractor including irrigation culverts and siphon structures.

3.10.4. Overall Progress

The overall construction progress for fill, concrete and excavation is provided below.



3.11. Personnel / Equipment Records:

	December-25 *
Personnel Records Total:	2098
Equipment Records Total:	1269

(*) This number of personnel represents: all employees of the Contractor, contracted resources/employees of our subcontractors and indirect service providers and employees of Specialist Contractors working on the project.

3.12. Site Status:

Scope of Work	Section 1	Section 2	Section 3	Section 4
Geotechnical Investigation Works	Completed	In Progress	Not Started	In Progress
Earthworks	In Progress	In Progress	Not Started	In Progress
Structures	In Progress	In Progress	Not Started	In Progress
Drainage	In Progress	In Progress	Not Started	In Progress
Finishing	Not Started	Not Started	Not Started	Not Started
Paving	Not Started	Not Started	Not Started	Not Started

REPUBLIC OF NORTH MACEDONIA

4. Financial Progress of the Project

Financial transactions between Ministry of Transport and Public Enterprise State Roads under road infrastructure financing program is listed below. The information is publicly available in "Open Finance" website (<https://open.finance.gov.mk/en/home>).

Date	Payer Name	Recipient Name	Amount (MKD)
26.04.2023	Ministry of Transport & Communications	Public Enterprise for State Roads	7,254,000,000
23.06.2023	Ministry of Transport & Communications	Public Enterprise for State Roads	3,280,000,000
28.07.2023	Ministry of Transport & Communications	Public Enterprise for State Roads	443,602,000
10.08.2023	Ministry of Transport & Communications	Public Enterprise for State Roads	209,927,500
02.10.2023	Ministry of Transport & Communications	Public Enterprise for State Roads	216,308,513
09.11.2023	Ministry of Transport & Communications	Public Enterprise for State Roads	223,596,680
15.12.2023	Ministry of Transport & Communications	Public Enterprise for State Roads	245,606,294
28.12.2023	Ministry of Transport & Communications	Public Enterprise for State Roads	669,225,176
28.12.2023	Ministry of Transport & Communications	Public Enterprise for State Roads	261,862,793
29.12.2023	Ministry of Transport & Communications	Public Enterprise for State Roads	1,695,871,044
25.11.2024	Ministry of Transport	Public Enterprise for State Roads	1,284,052,574
13.12.2024	Ministry of Transport	Public Enterprise for State Roads	456,878,449
31.12.2024	Ministry of Transport	Public Enterprise for State Roads	1,238,567,971
31.12.2024	Ministry of Transport	Public Enterprise for State Roads	1,120,501,006
22.04.2025	Ministry of Transport	Public Enterprise for State Roads	599,794,350
30.04.2025	Ministry of Transport	Public Enterprise for State Roads	524,972,228
29.05.2025	Ministry of Transport	Public Enterprise for State Roads	681,026,665
26.06.2025	Ministry of Transport	Public Enterprise for State Roads	830,336,364
24.07.2025	Ministry of Transport	Public Enterprise for State Roads	1,022,217,192
29.08.2025	Ministry of Transport	Public Enterprise for State Roads	1,200,875,741
19.11.2025	Ministry of Transport	Public Enterprise for State Roads	1,149,367,247
17.12.2025	Ministry of Transport	Public Enterprise for State Roads	1,180,803,394

Transaction information in the above table is retrieved from:

https://open.finance.gov.mk/en/search?recipient=&payer=&payer_recipient_btn=payer_recipient&term=&payerEDB=&recipientEDB= (retrieval date: 02 February 2026)

5. Site Photos:



Photo 1: Section 4 Earthworks Operations



Photo 2: Section 2 Earthworks Operations



Photo 3: Section 2 B0070 General View

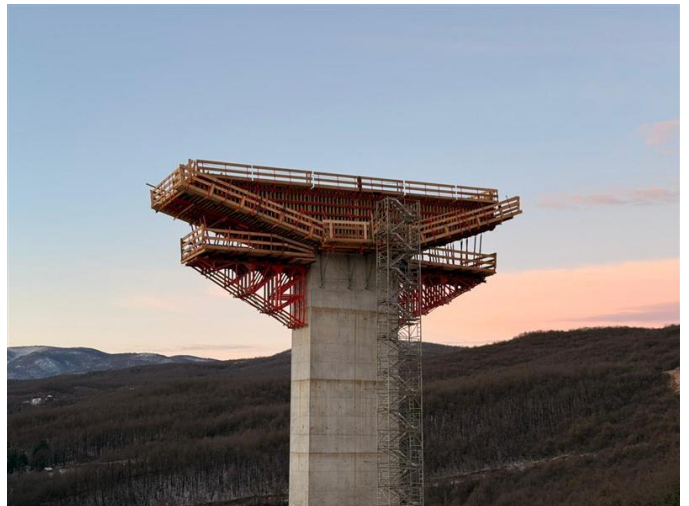


Photo 4: Section 2 B0080 Pier Head



Photo 5: Section 2 B0080 Bridge Pier Elevation



Photo 6: Section 4 Earthworks Operations



Photo 7: Section 2 Gabion Wall Works



Photo 8: Section 2 Slope Protection Operations



Photo 9: Section 1 Box Culvert Excavation



Photo 10: Section 2 Earthworks Operations



Photo 11: Section 4 Quarry Operations



Photo 12: Section 2 Slope Protection Operations